

Thermal Link

The electro fusible thermal link is designed to be used where there is a potential fire hazard, such as in a boiler or plant rooms.

In the event of fire the temperature sensitive fuse will interrupt the power supply, activating alarms or shut down devices.

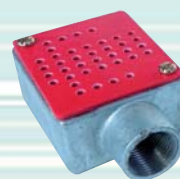
The unit should be mounted so that the perforated cover faces downwards and the ventilation holes in the back/side of the box must not be obstructed.

The link is electrically rated at 5 amps max on 200/250 Vac and melts at 68° C. IP30 Protection

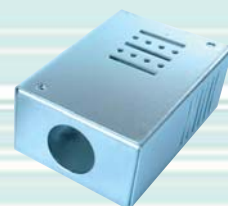
TL-1 Cast aluminium box with a 20mm conduit thread 60x50x30mm

TL 2 Zinc plated steel with a 20mm conduit entry 75x53x31mm

TL-1



TL-2



Emergency Stop Button

The emergency stop button is designed for manual shut down of systems or machines in the event of fire or other emergencies.

Key reset version can be used to prevent any unauthorized restarting of machinery/system following an emergency shut down.

10 (6) Amps at 230 Vac Volts free contact. IP65 Protection

EM-1 Push to break circuit – Turn to reset

EM-1K Push to break circuit – Use key to reset

EM-1K



EM-1



Closed Position Indication Switch

The closed position switch can be used on ZEV gas solenoid valves to indicate position of valve.

Operational voltage: 250 Vac 3A

Enclosure: IP65

Ambient Temperature: -15 to +60°C

CPI-20/25 Valve size 3/4" and 1"

CPI-32/40 Valve size 1 1/4" and 1 1/2"

CPI-50 Valve size 2"

CPI-65/80 Valve size 2 1/2" and 3" BSP & Flanged

CPI-100 Valve size 4" Flanged

CPI



Xenon Beacon

White polycarbonite body.

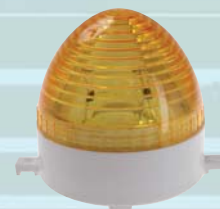
BCR-1 Red 230 Vac 3W 1 sec pulses

BCY-1 Amber 230 Vac 3W 1 sec pulses

BCR-1



BCY-1



Stand Alone Gas Minder (Interlock System)

Complies with all current Corgi gas regulations for commercial kitchens. gas Minder ensures there is no gas flow to burners unless air extraction is present.

This unit to be used with 230 Vac gas solenoid valves

The system consists of central control unit + pressure switch + duct kit + emergency stop button

ISP-1

